

Advantages

- Easy and quick to apply.
- Excellent acoustic performance.
- Applied as a single layer treatment.
- Excellent fire resistance & temperature stability.
- Available in various formats to suit application.
- Low thermal conductivity.
- Low toxicity.

Applications

Wilhams WIL-LAG FL Foam Laminates are a highly efficient acoustic treatment for ductwork, suspended ceilings, infills for partitions, ceiling baffles above offices, enclosures and similar applications where a substantial reduction of breakout noise is required.

Description

Wilhams WIL-LAG FL Foam Laminates are flexible and available in a range of formats, consisting of a four part laminate, incorporating two spaced layers, a heavy mass layer and an outer vapour barrier. The composites meet Class 'O' requirements of the UK Building Regulations.

Physical Information

Dimensions

Standard sheet size: 1.2m x 1m

Other sizes are available upon request.

The composite thickness is dependent on format required.

Grades

Wilhams WIL-LAG FL foam laminates are available in two basic designs:

WIL-LAG FL-B incorporates a polymeric heavy mass barrier material of either 5kg/m² (B5) or 10 kg/m² (B10) surface weights.

WIL-LAG FL-L uses an acoustic grade lead sheet of either 5kg/m² (L5) or 10 kg/m² (L10) surface weights.

Facings

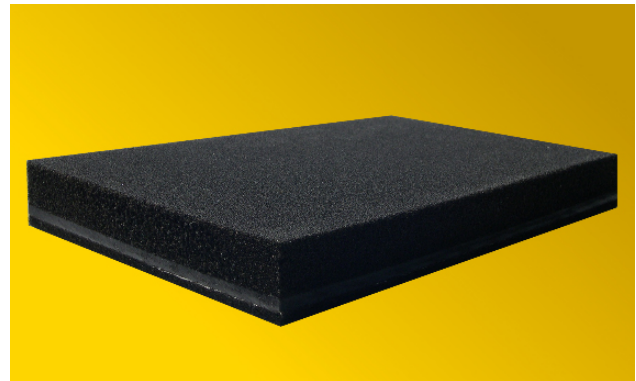
Wilhams WIL-LAG FL foam laminates type FL-B and FL-L, are available with standard facing and backings applied to standard acoustic foam thicknesses:

SA – self adhesive backing
CO – Class 'O' foil facing
P6 – Acoustic foam 6mm thick
P12 – Acoustic foam 12mm thick
P25 – acoustic foam 25mm thick

Technical Information

Wilhams WIL-LAG FL foam laminates conform to the following specifications:

- Foam spacer (absorptive) layer – See Wilhams PUNF acoustic foam data sheet 1/01.
- Polymeric barrier – See Wilhams WB acoustic barrier data sheet 2/01.



- Composite operating temperature – -30 to 85°C
- Thermal Conductivity to BS 4745 1990

Mean temperature °C	10	25	50
W/m ² K	0.0529	0.0541	0.0561

Installation Guidelines

Wilhams WIL-LAG FL foam laminates are easy to install, being accomplished by either bonding or using mechanical fixings, or a combination of both.

- Ensure the substrate surface is dry, clean and free from oil and grease.
- Where the composites weigh more than 5kg/m² mechanical fasteners should be used in combination with adhesive or self adhesive backed laminates. Particular attention should be paid to vertical or inverted surfaces where additional banding may be required.
- If in doubt please call our sales and technical support team for assistance.

Installation Accessories

Wilhams recommend the following products to assist installation

Aerosol Adhesive

Wilhams Spraytack is a specially formulated non-flammable synthetic rubber adhesive, available in 500ml aerosol cans. It provides up to 5m² coverage and requires application to both surfaces before bonding.

Brush Applied Adhesive

Wilhams A8514 is a low n-Hexane formula designed specifically for Wilhams acoustic foams, providing a rapid tack. It is available in 5 litre cans, which provide up to 3m² coverage. Wilhams A8514 can be used either as a one way wet or two way dry contact adhesive.

Pins and Washers

Wilhams pins and washers are available in two designs

- Self adhesive comes with locking washer
- Perforated base for use with a separate adhesive comes with locking washer

Wilhams Insulation Group

117 Bohemia Road, St Leonards-On-Sea, East Sussex TN37 6RL United Kingdom

Export Sales:- Tel: +44 (0) 1424 717171 Fax: +44 (0) 1424 20100 Email: sales@wilhams-insulation.co.uk

© Copyright 2005 Wilhams Insulation Limited.

IMPORTANT NOTICE: Any directions for use are given for guidance only and are not intended to form part of any contract. They should be varied or adapted to suit your particular materials or conditions of use. Goods supplied by the company are made to approved standards from the highest quality raw materials but no warranty or guarantee is given as to their suitability for any particular purpose or application, and no liability is accepted for any loss or damage arising directly or indirectly from the use of the Company's products irrespective of any information given to us as to intended use of such products. It is therefore recommended that prospective users should test a sample of this product under their own conditions to satisfy themselves that the product to be used is suitable for that purpose intended.

Acoustic Performance

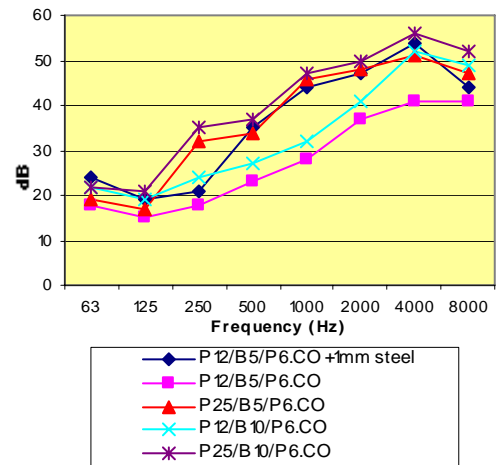
Measurement of sound transmission in accordance with BS 2750:1980, ISO 140:1978.

WIL-LAG FL-B

Wilhams WIL-LAG FL-B is a composite of two layers of Wilhams PUNF acoustic foam, with an inner isolated layer of heavy mass barium sulphate loaded polymeric barrier.

Sound Reduction Index

Format \ Hz	63	125	250	500	1k	2k	4k	8k
P12/B5/P6.CO + 1mm steel	24	19	21	35	44	47	54	44
P12/B5/P6.CO	18	15	18	23	28	37	41	41
P25/B5/P6.CO	19	17	32	34	46	48	51	47
P12/B10/P6.CO	22	19	24	27	32	41	52	49
P25/B10/P6.CO	22	21	35	37	47	50	56	52



WIL-LAG FL-L

Wilhams WIL-LAG FL-L is a composite of two layers of Wilhams PUNF acoustic foam, with an inner isolated layer of heavy mass acoustic grade lead sheet barrier.

Format \ Hz	63	125	250	500	1k	2k	4k	8k
P12/L5/P6.CO + 1mm steel	24	23	25	29	34	46	53	42
P12/L5/P6.CO	17	18	21	26	32	40	43	44
P25/L5/P6.CO	18	21	35	38	48	48	52	47
P12/L10/P6.CO	24	19	24	27	28	41	51	46
P25/L10/P6.CO	22	23	37	39	48	52	59	47

